

# FORESTRY

## Woodland Owner Notes eNewsletter

**December 2020**



### Virtual Christmas Tree Farm Tour

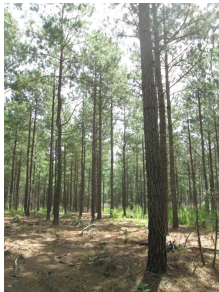
Wondering how the Christmas tree farms are doing this year? You can visit the farms and see the research that was going on virtually at the [2020 Virtual Christmas Tree Farm Tour](#). Be sure to keep checking our [Christmas Tree page](#) for updates.



Photo: Land & Ladies

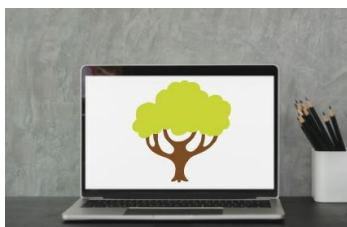
### The Woman Landowner Academy

The Woman Landowner Academy is a 6-week online program hosted through a private Facebook Group. Within the group you will have exclusive access to materials, resources, land management professionals, as well as the opportunity to join a network of women just like you. The Academy will include weekly one hour LIVE sessions, that will be recorded, to go over various landownership and management topics. Check out the [event flyer](#) and [registration page](#) for more information! .



### Educational Needs Assessment of NC Forest Landowners: Preliminary Results

Did you know that 65% of North Carolina's valuable forest resources are owned by non industrial private forest landowners? We reached out to 3,000 landowners across the state to conduct an educational needs assessment and our preliminary results are in. See what we've uncovered so far in the [latest publication](#) available now.



### Forestry Webinars On Demand!

As the temperatures outside begin to fall, take some time to explore out on demand forestry webinars. We've compiled them all into [one convenient place](#) on our website, so get started today! If there are topics you'd like to see covered in the new year, please reach out to [our staff](#) with ideas and suggestions!

## Coming Events of Interest to Woodland Owners

**December 4, 2020 (F), 10-11:30 a.m. ET, Sea Level Rise Webinar.** Join this webinar series to learn more about climate change in North Carolina. The series will begin with an overview of the most up-to-date scientific information about climate change from the North Carolina Climate Science Report (NCCSR), as well as a review of activities happening at the state level. Subsequent webinars will take a deeper dive into individual topics to explore the science and actions taking place across the state. This series is hosted by NC State University's State Climate Office of North Carolina (SCONC) and the North Carolina

Institute for Climate Studies (NCICS). More information can be found on the [event page](#).

**December 5, 2020 (Sat), 12:30-3:30 p.m. ET, Project Learning Tree K-8 Workshop (Hybrid).** Please read the full description to know what type of experience to expect and the full requirements for completion and credit. This workshop will take place in three parts, two of which will be virtual and on your own, and the cumulating in-person gathering at The North Carolina Arboretum in Asheville on Saturday, December 5, 2020 from 12:30-3:30 p.m. Participation in all three sections is required for full credit in the course (8 contact hours for Criteria I Credit in EE Certification or 0.8 CEUs). For more information visit [the event page](#).

**December 7-11, 2020, Managing for the Whole Forest Webinar Series.** The UGA Warnell School of Forestry & Natural Resources is offering a series of 5 webinars titled "Managing for the Whole Forest". Topics include native plants, water resources, beneficial insects, invasive species and more! Check out the [event flyer](#) for more information and times for the webinars.

**December 10, 2020 (Th), 1-2:30 p.m. ET, ForestHer NC Wildlife Webinars: Human Wildlife Interactions and Identifying Wildlife by Tracks, Marking, and Scat.** This is the fourth webinar in the ForestHer NC fall webinar series, and a registration link and more information will be available soon on the [event page](#). Stay up to date and connected with the ForestHer NC community with [their Facebook page](#).

**December 15, 2020 (Tu), 10-11:30 a.m. ET, Talking about Climate Change.** Join this webinar series to learn more about climate change in North Carolina. The series will begin with an overview of the most up-to-date scientific information about climate change from the North Carolina Climate Science Report (NCCSR), as well as a review of activities happening at the state level. Subsequent webinars will take a deeper dive into individual topics to explore the science and actions taking place across the state. This series is hosted by NC State University's State Climate Office of North Carolina (SCONC) and the North Carolina Institute for Climate Studies (NCICS). More information can be found on the [event page](#).

## Webinars & Online Learning

**Project Learning Tree Free Family Activities** Nature is a great teacher! Try these activity ideas from Project Learning Tree to connect the children in your life to the outdoors and nature. You can [access these free activities by clicking here](#).

**Forestry Webinars on Demand** Webinars are a great opportunity to learn about different forestry topics from experts in the field, and we have collaborated with professionals from a variety of backgrounds, including forestry, economics, law, and more to bring you relevant topics at home. [You can access the list of webinars on the NCSU Extension Forestry website](#).

**Project Learning Tree Professional Development Programs** Both of these online PD programs are self-paced and you can stop and pick-up right where you left off (great for parents working from home!). The online courses contain videos, participant worksheets for self-reflection, and links to additional resources. Each PD program includes an electronic version of the guide, or you can purchase the printed version (shipment may be delayed).

- [PLT K-8 Online Professional Development](#) (4 hours): \$40 + \$24.99 for print guide (optional)
- [PLT Environmental Experiences for Early Childhood](#) (3 Hours): \$30 + 19.99 for print guide (optional)

**Project Learning Tree eUnits for Criteria III** Each eUnit will be yours forever (no renewal fee) and is completely housed online and tied to your email address. These are built on the same training platform as the activity guides, so again, you can start and stop the trainings at your will. The training for each is about 3 hours, and each costs \$40.

- [Tremendous Science \(K-2\)](#)
- [Energy & Ecosystems \(3-5\)](#)
- [Carbon & Climate \(6-8\)](#)

**ForestryWebinars.net** You can find more than 700 archived webinars on a variety of forestry topics. You can [access this resource on the Forestry Webinars website](#).

**NC Tree Farm Program Online Learning** Learn about a variety of forestry topics through webinars, videos and online courses. You can access these courses by [visiting the NC Tree Farm website](#).

**eLearn: Urban Forestry** This online resource provides an interactive introduction to urban forest management. You can [access this course by visiting the eLearn website](#).

**eFire** This interactive site allows you to choose your own eFIRE experience! Become virtually immersed in a prescribed burn, learn why and how burns are conducted, read the provided resources, and/or hear from the multiple types of people who use prescribed fire as a land management tool! You can [access this resource by eFire website](#).

**Introduction to Southeastern Prescribed Fire** This course is designed to introduce students to the fundamental basics of prescribed burning in Southeastern forested ecosystems. You can [access this course by visiting the Southeastern Prescribed Fire website](#).

**Woodland Stewardship YouTube Channel** This channel features webinars and other forestry-related videos. You can [access the Woodland Stewardship channel on YouTube](#).

**Southern Fire Exchange YouTube Channel** The Southern Fire Exchange (SFE) is a regional program for fire science delivery in the Southeast, funded by the Joint Fire Science Program. You can [access the Southern Fire Exchange channel by visiting YouTube](#).

---

**Woodland Owner Notes E-news is a monthly email newsletter from Extension Forestry at NC State University. This newsletter is made possible through support from Renewable Resources Extension Act and the National Institute of Food and Agriculture. The 2020 editors are:**

Mary Lou Addor, NC State University, Extension Forestry, Raleigh, NC  
Robert Bardon, NC State University, Extension Forestry, Raleigh, NC  
Jim Hamilton, NC Cooperative Extension Service, Boone, NC  
Alton Perry, Roanoke Electric Cooperative, Rich Square, NC  
Colby Lambert, NC Cooperative Extension, Lillington, NC  
Rajan Parajuli, NC State University, Extension Forestry, Raleigh, NC  
Jennifer Fawcett, NC State University, Extension Forestry, Raleigh, NC

Send Comments to the Editor, at NC State University, Email: [extension\\_forestry@ncsu.edu](mailto:extension_forestry@ncsu.edu). If you received this email as a forwarded message, and like what you see, please use this [LINK](#) to join the mailing list.



NC State University and N.C. A&T State University work in tandem, along with federal, state and local governments, to form a strategic partnership called N.C. Cooperative Extension.

