

FORESTRY

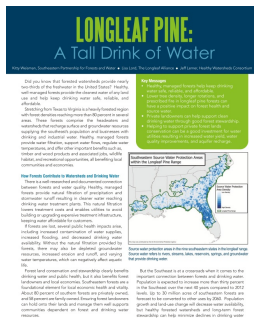
Woodland Owner Notes eNewsletter

September 2021



Change Is in the Air: The Miracle of Fall Colors

Fall is almost here and every year we revel in the beauty of the bright red, orange, and yellow leaves that come with this season. "Changes in leaf color are the result of chemical changes in the leaf that take place due to certain weather conditions." Read more about why leaves change to their autumn colors and color characteristics of various tree species in this [article on the miracles of fall](#).



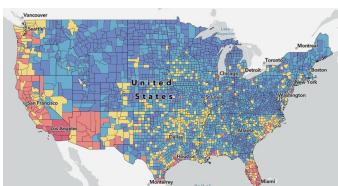
Longleaf Pine: A Tall Drink of Water

The **America's Longleaf Restoration Initiative (ALRI)** is excited to share their latest publication, "**Longleaf Pine: A Tall Drink of Water!**" This is the fourth fact sheet in a series of resiliency documents and showcases how protecting and restoring longleaf pine forests can help keep source water safe, reliable, and affordable. The fact sheet also highlights how good stewardship can contribute to drinking water and benefits for water utilities of investing in longleaf restoration. Take a look!

Upcoming Forest Farming Intensives



The **Appalachian Beginning Forest Farmer Initiative** has two great events coming up this September. In Duffield, VA, the **Forest Farming Intensive: Propagation to Processing** workshop will be held on Friday, September 17th and Saturday, September 18th. In Asheville, NC, the **Forest Farming Intensive: Growing Under the Canopy** workshop will be held on Saturday, September 25th and Sunday, September 26th. Spend time networking with other aspiring and experienced forest farmers and gain knowledge on the vast topics surrounding this valuable practice.



National Risk Index Map

FEMA's National Risk Index is a dataset and online tool to help illustrate the United States communities most at risk for 18 natural hazards. **The National Risk Index Map** allows users to visualize hazards in every county in the United States. View natural hazards that may affect your woodlands as well as woodlands across the U.S.

September 1, 2021 (W) - September 2, 2021 (Th), 1 - 4 PM ET, Fire Database Community Workshop. Are you ready to change science? Join other fire professionals in the virtual meeting and discussion as they highlight cutting-edge fire research, engage interdisciplinary collaborations, and discuss the need for and benefits of creating a fire database network. For further details on the agenda, how to register, and more visit the [Fire Database Community Workshop webpage](#).

September 10, 2021 (F) - September 11, 2021 (S), 30th Annual Environmental Educators of North Carolina Conference. Join the Southeastern Environmental Education Alliance for the 30th Annual Environmental Educators of North Carolina Conference at Lutheridge Arden, NC from Friday, September 10 to Saturday, September 11, 2021. This year's theme is rEEmerge, honoring new beginnings. Get registration details, agenda breakdowns, fees, lodging information, and more on the [Environmental Educators of North Carolina conference page](#).

September 17, 2021 (F) - September 18, 2021 (Sat), Forest Farming Intensive: Propagation to Processing in Duffield, VA. Whether you're just getting started with forest farming, or looking to ramp up production for the market, this intensive has something for everyone. On Friday evening, spend time networking with other aspiring and experienced forest farmers over dinner and enjoy a keynote from Dr. Jeanine Davis. On Saturday, get ready to dig in with intensive learning stations covering site selection, propagation, syrup production, and sustainable harvest at Appalachian Cove Forest Farm, and post-harvest handling and processing at the Appalachian Harvest Herb Hub. From propagation to processing for sale - spend a day and a half of networking and learning from experienced forest farmers, researchers, technical service providers, and herb brokers! [Get more information and register](#).

September 23, 2021 (Th), 1 - 2:30 PM ET, Moving to Hybrid Programs: A Discussion with Natural Resource Professionals. We'll hear from presenters from around the country who will share their personal experiences and lessons learned in moving their natural resource programs to a hybrid platform. They will cover various types of hybrid events, including meetings, workshops, and large-scale conferences, and how to ensure accessibility. This event is open to everyone but is targeted at natural resources professionals who are considering organizing hybrid events in the future. Take a look at the [Moving to Hybrid Programs flyer](#) for more on presenters and further details. [Register in advance](#) now!

September 25, 2021 (Sat) - September 26, 2021 (Sun), Forest Farming Intensive: Growing Under the Canopy in Asheville, NC. This weekend intensive will provide an overview of forest farming from the forest floor to the shelf including the basics of growing woodland medicinals, the economics of forest products, value-added and natural product development, from propagating and cultivating, to harvesting, processing, and marketing forest products. Participants will gain knowledge on a variety of plants including ginseng, goldenseal, black cohosh, and various tree nuts. This workshop is offered in partnership with the Appalachian Beginning Forest Farmer Coalition (ABFFC), which is dedicated to increasing opportunities for farmers and forestland owners in Appalachia and beyond who are interested in starting or expanding/diversifying a forest farming operation. Funded by NIFA under the Beginning Farmer and Rancher Development Program (BFRDP). [Get more information and register now](#).

October 23, 2021 (Sat), 9 AM - 3:30 PM ET, Project Learning Tree: Explore Your Environment K-8 Workshop (Union County). Join other K-8 classroom and nonformal educators at the [Union County Agricultural Center](#) in Monroe, NC as we explore activities in the newly released Project Learning Tree [Explore Your Environment](#) K-8 Activity Guide. The PLT activity guides are provided free of charge to participants through support from the NC Forestry Association. CEU renewal credits are available. This workshop qualifies for Criteria I or II in the EE Certification Program (K-8). Register by [October 15th](#). The registration fee is \$20. Find more details and register in advance on the [NC PLT Union County event registration page](#).

October 26, 2021 (T) - October 27, 2021 (W), Virtual Forest Landowner Conference. [The Sustainable Forestry and Land Retention Project](#) helps families in Roanoke Electric Cooperative's service territory increase the income and asset value of family-owned forestland and encourages forest health, land retention, and the opportunity to create

intergenerational wealth. This conference will inform and educate landowners on strategies for estate planning; on programs and technical assistance available through state forestry agencies and U.S. Department of Agriculture agencies; and on forestry and agricultural taxation. [More information to come.](#)

November 3, 2021 (W), 1 - 5 PM ET, Project Learning Tree: Explore Your Environment K-8 Workshop (Hybrid). Join other K-8 classroom and nonformal educators in this hybrid event as we explore activities in the newly released Project Learning Tree [Explore Your Environment](#) K-8 Activity Guide. The PLT activity guides are provided free of charge to participants through support from the NC Forestry Association. This workshop will take place at the [Kathleen Clay Edwards Family Branch Library](#) in Greensboro, NC. 2 hours of required work must be completed before the workshop begins at 1 PM. CEU renewal credits are available. This workshop qualifies for Criteria I or II in the EE Certification Program (K-8). Register by [October 15th](#). The registration fee is \$20. Find more details and register in advance on the [NC PLT Hybrid event registration page](#).

Webinars & Online Learning

Forestry Webinars on Demand Webinars are a great opportunity to learn about different forestry topics from experts in the field. We have collaborated with professionals from a variety of backgrounds, including forestry, economics, law, and more to bring you relevant topics at home.

ForestryWebinars.net You can find more than 700 archived webinars on a variety of forestry topics.

NC Tree Farm Program Online Learning Learn about a variety of forestry topics through webinars, videos, and online courses.

eLearn: Urban Forestry This online resource provides an interactive introduction to urban forest management.

eFire This interactive site allows you to choose your own eFIRE experience! Become virtually immersed in a prescribed burn, learn why and how burns are conducted, read the provided resources, and/or hear from the multiple types of people who use prescribed fire as a land management tool!

Introduction to Southeastern Prescribed Fire This course is designed to introduce students to the fundamental basics of prescribed burning in Southeastern forested ecosystems.

Woodland Stewardship YouTube Channel This channel features webinars and other forestry-related videos.

Southern Fire Exchange YouTube Channel The Southern Fire Exchange (SFE) is a regional program for fire science delivery in the Southeast, funded by the Joint Fire Science Program.

Woodland Owner Notes E-news is a monthly email newsletter from Extension Forestry at NC State University. This newsletter is made possible through support from the Renewable Resources Extension Act and the National Institute of Food and Agriculture. The 2021 editors are:

Mary Lou Addor, NC State University, Extension Forestry, Raleigh, NC
Robert Bardon, NC State University, Extension Forestry, Raleigh, NC
Jim Hamilton, NC Cooperative Extension Service, Boone, NC
Alton Perry, Roanoke Electric Cooperative, Rich Square, NC
Colby Lambert, NC Cooperative Extension, Lillington, NC
Rajan Parajuli, NC State University, Extension Forestry, Raleigh, NC
Jennifer Fawcett, NC State University, Extension Forestry, Raleigh, NC

Send Comments to the Editor, at NC State University, Email:
extension_forestry@ncsu.edu. If you received this email as a forwarded message, and
like what you see, please **[add yourself to our mailing list by subscribing](#)**.



NC State University and N.C. A&T State University work in tandem, along with federal, state and local governments, to form a strategic partnership called N.C. Cooperative Extension.

